



CHOICE FILMS AT UMBRA



2023

RESOURCE GUIDEBOOK



HOUSE RULES

HOLDS

Upon request soft holds can be placed by productions interested using the UMBRA Stages. In the event that more than one production is interested in the same date(s), those productions will be given a 2nd hold. Productions with a 2nd soft hold can challenge previous holds. When a hold is challenged, those with the earlier holds are given 24-48 hours to pay their deposit and confirm their solid hold. If the previous holds decide to release their holds, the challenger can confirm a solid hold with a 50% deposit. Please note that productions with a short-term hold cannot challenge a longer-term hold.

BOOKINGS AND CANCELLATIONS

A credit card on file is required to confirm a hold with a 50% deposit (by check or credit card). Once a booking is confirmed it cannot be cancelled. Credit card payments are subject to an additional 3% service charge.

DEPOSIT AND PAYMENTS

A 50% deposit on both the stage and equipment invoices must be paid PRIOR to arrival at UMBRA. All remaining balances must be paid no later than the production's last day at the stage. Overtime charges, additional waste, equipment additions, and expendables will be billed on subsequent invoices and paid within 10 business days of receipt. We must hold a credit card on file for all projects regardless of payment method. However balances can be paid via check in order to avoid the additional credit card service charge of 3%.

RENTAL AGREEMENT

Our standard agreement, which will be emailed to you must be signed and returned to us (via email or fax) at least 1 week before filming commences at UMBRA. Please note our license agreement is made with the party directly insuring the production. Therefore, the agreement will only list the party and address of the actual insured as well as the individual communicated to the company as the designated representative of the insured.

ALL STAGE AMENITIES

Quiet Air Conditioning and Heating throughout, Private Dressing Rooms / HMU Suites with ensuite shower, large drive in docks, secured reception areas with zoned security, free parking, on site offices, conference rooms, on site catering hall and prep kitchens, high speed internet and guest internet, hardline phones optional, onsite garbage removal. Floorplans also available online.

LIGHTING AND CAMERA EQUIPMENT

UMBRA provides camera, grip and lighting equipment through our exclusive in-house vendors (VER and Lighthouse). Please see "In-House Equipment" on page 6 to learn more about our typical in-house gear package. If your shoot is looking for something we don't have in house, we can easily sub-rent any items not currently available. Keep in mind to submit your equipment rental order at least 5 business days in advance of your first day at our stages to ensure its availability. Delays may result in the requested additional equipment being unavailable.

PRODUCTION SUPPLIES, EXPENDABLES AND ADDITIONAL RENTALS

UMBRA is a turnkey facility and able to provide your production with a wide variety of supplies and expendables, including steamers, wardrobe racks, pop up tables, tents etc. Our expendables are generally per-use, but please let us know at least three business days in advance of your stage rental what expendables you'll be needing or if there are specific needs that we can accommodate. We have a variety of packages but can also provide specific rentals upon request.

LOCAL HOUSING FOR CAST AND CREW

UMBRA stages is proud to offer exclusive housing options for non-local cast and crew. We manage three private mansion residences that are fully turn-key and have several bedrooms, working kitchens, parking and all the amenities of home. Additionally, UMBRA has a hotel special discount rate with three local hotels, for long term or short term stays. Please inquire about your housing needs and let us help you build your home away from home. Access discounted Air, Hotel, Car and Group Reservations through UMBRA Stages website link.

NON STAGE LOCATIONS WITHIN THE UMBRA FACILITY

All shooting must take place on rented sound stages, and not in supplemental areas (bathrooms, lobbies, dressing rooms, exteriors, and hallways) without written prior approval. Any shooting outside of the stages must be covered by license agreements and insurance, and therefore supervised by UMBRA personnel.

SCENIC SHOPS

We are proud to offer two fully equipped scenic shops for any set builds and/or painting. All art department construction must take place in the authorized spaces only and not on public sidewalks or other areas within the facility. We also require the use of drop cloths for painting and can provide those at additional cost if needed. Productions will be charged in full for any painting or repairs to floors, walls, and sidewalks that are damaged or painted.

SCHEDULED CALL TIMES

When scheduling your shoot, keep in mind that daily start times can be as early as needed. If however, the day runs longer than a 13hour day there will be overtime charge of \$100.00 per hour. If a start time is before 6:00am regardless of wrap time an Early Opening fee of \$50.00 per hour will be assessed. Call times for each must be given to your stagehand by 5:00pm the previous day. If these times should change it is your responsibility to notify the studio manager immediately. In order to provide proper scheduling we request that estimate in and out times be submitted in advance for each day.

USE OF SPECIAL EFFECTS / STUNTS

In the event that the production will be utilizing various special effects involving water, pyrotechnics, wire - work or any other effects or stunt related, those activities must be declared at the time of booking. They must also be performed by licensed technicians only. As part of our booking policy licenses must be provided to us for approval prior to first day of shooting. Any unauthorized effects or stunts will result in production being halted, fined, or possibly both.

CRAFT SERVICE AND CATERING

Productions can rent our catering room, if available. This rental is \$200.00 per day and includes tables and chairs. Contact stage management for pricing and additional information. If your production needs suggestions for lunch or catering options available in the neighboring areas, please refer to the "Locally Sourced" page of this package.

TRASH DISPOSAL

Each production is allotted two yards of trash during its stay. Additional trash can be disposed of for \$50.00/2 yard. In the event that your production will need to dispose of a very large amount of garbage (large set pieces, etc.), Please contact your UMBRA stage manager so that a large dumpster can be arranged for your shoot.

CAST AND CREW PARKING

UMBRA Stages offers ample free parking for productions. Please coordinate your parking needs with your stage manager at least two days prior to rental.

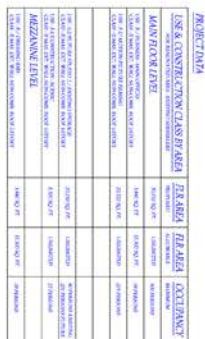
PRODUCTION INSURANCE

Insurance certificates and endorsements must be submitted at least one week in advance of your shoot. Failure to submit your insurance in a timely manner will prevent your shoot from entering our studios. Detailed insurance information will be issued in a confirmation email to sent during the booking process.

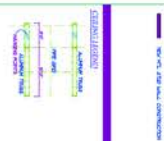
TAX EXEMPT STATUS

Inform the Studio Manager working on your project at your earliest convenience if you are tax exempt and submit your Exempt Use Certificate via email or fax.

MAIN FLOOR PLAN



SESSION ONE	7:45 AM - 2:00 PM	SESSION ELEVEN	9:00 AM - 2:00 PM
WELL ANALYST REVIEW		STILL, DETAILS OF CHAIR	
SESSION TWO	12:45 PM - 2:00 PM	SESSION TWELVE	17 JANUARY 2002
CONSULTANTS COMMENTS		MEETING CHAIRING ROOM CHAIR	
SESSION THREE	21 JANUARY 2002	SESSION THIRTEEN	14 FEBRUARY 2002
LOADING DOCK REVISIT		MEETING RE-ELECTED CHAIR PLAN	
SESSION FOUR	12:45 PM - 2:00 PM	SESSION FOURTEEN	26 FEBRUARY 2002
CHAIRING ROOM		STILL TWO DESIGNERS CHAIR PLAN SETS	
SESSION FIVE	12:45 PM - 2:00 PM	SESSION FIFTEEN	8 MARCH 2002
WELL ANALYST REVIEW		CHAIR SETS STUDIED TWO NEW CHAIR PLANS	
SESSION SIX	21 JANUARY 2002	SESSION SIXTEEN	25 APRIL 2002
WELL ANALYST REVIEW		AS BUILT PLANS - REVISIT CHAIR CHAIR	
SESSION SEVEN	21 JANUARY 2002	SESSION SEVENTEEN	25 APRIL 2002
WELL ANALYST REVIEW		REVISIT CHAIRING ROOM CHAIR	
SESSION EIGHT	21 JANUARY 2002	SESSION EIGHTEEN	25 APRIL 2002
WELL ANALYST REVIEW		WELL ANALYST REVIEW	
SESSION NINE	21 JANUARY 2002		
SESSION TEN	21 JANUARY 2002		
SESSION TWELVE	21 JANUARY 2002		
WELL ANALYST REVIEW			

[illegible]

MAIN FLOOR PLAN

DATE: 8 NOV 1964

SCALE 1/16" = 1" IN
 DRAWING NO. A

ERIC KNUTE OSBORN
ARCHITECT
ENVIRONMENTAL CULTURAL/34-ARCHITECTS
P.O. BOX 114 / 1097 LITTLE OCEAN ROAD
ROCK TAVERN, NY 12571-0014
TEL: (518) 534-4111 FAX: (518) 534-4111
WWW.ERICKNUTEOSBORN.COM

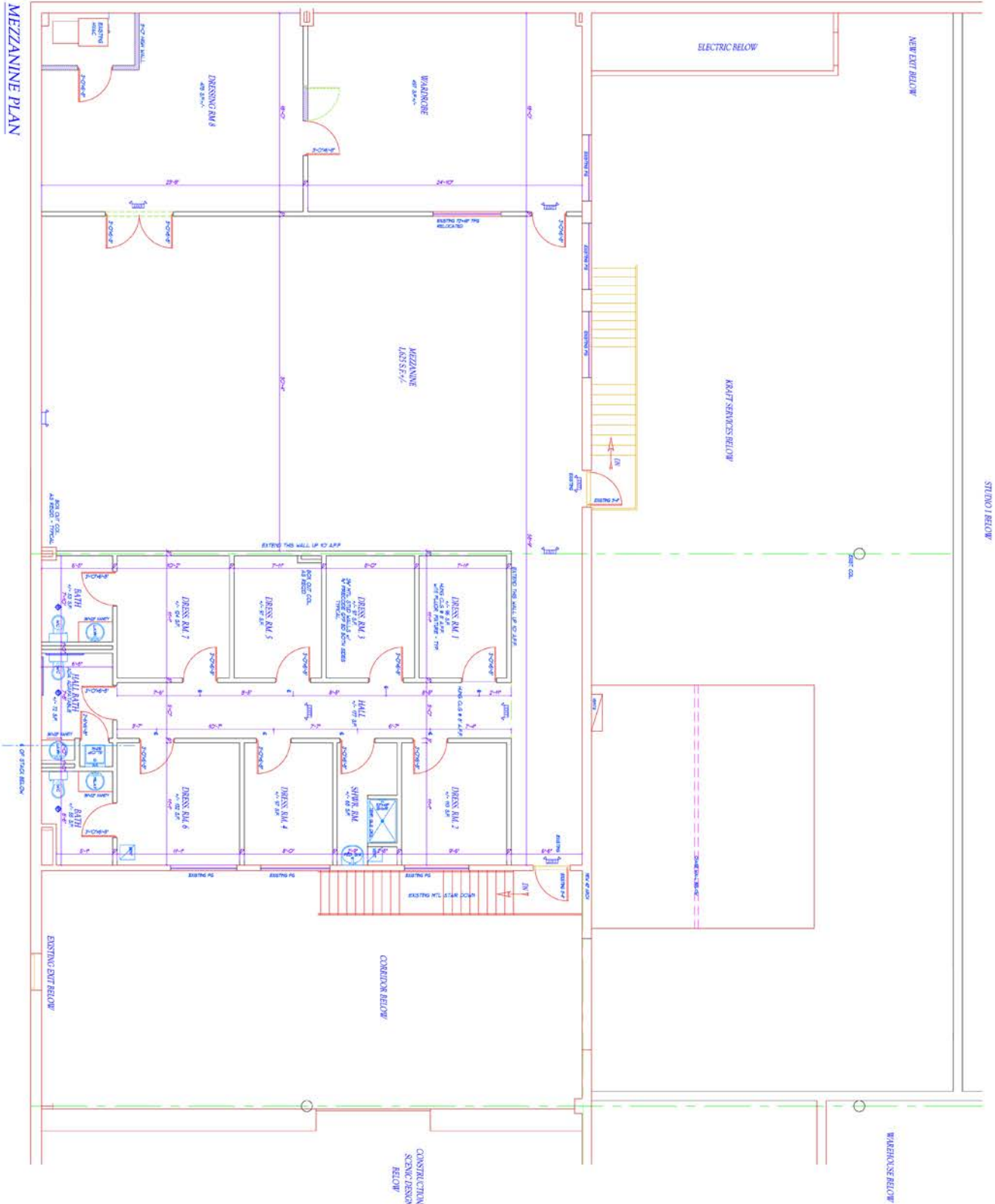


PROJECT
PROMISED SOUND STAGE FOR
UMBRA OF NEWBURGH
9 SCOTCH DRIVE
CITY OF NEWBURGH
ORANGE COUNTY, NEW YORK

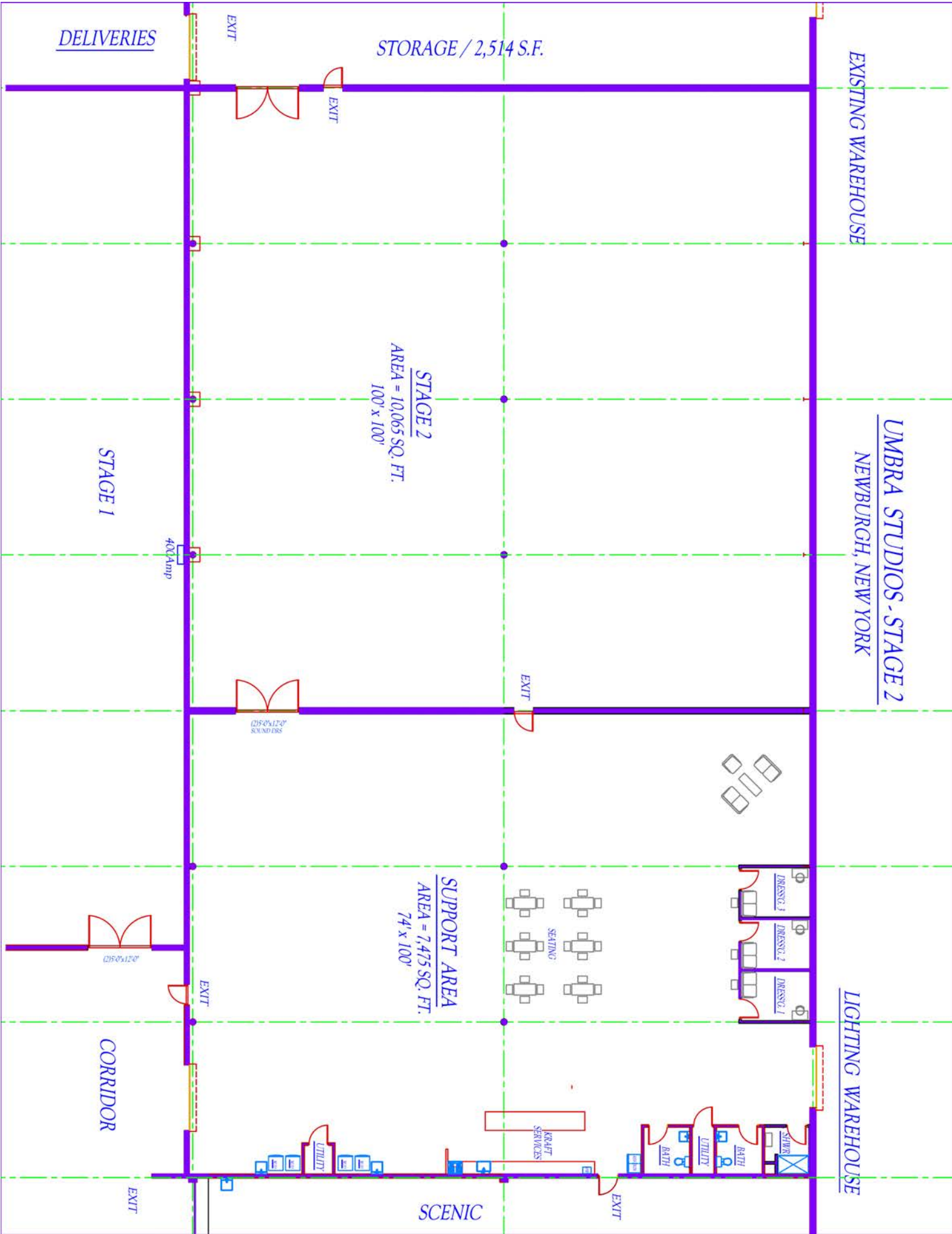
DATE: 8 NOV 1964

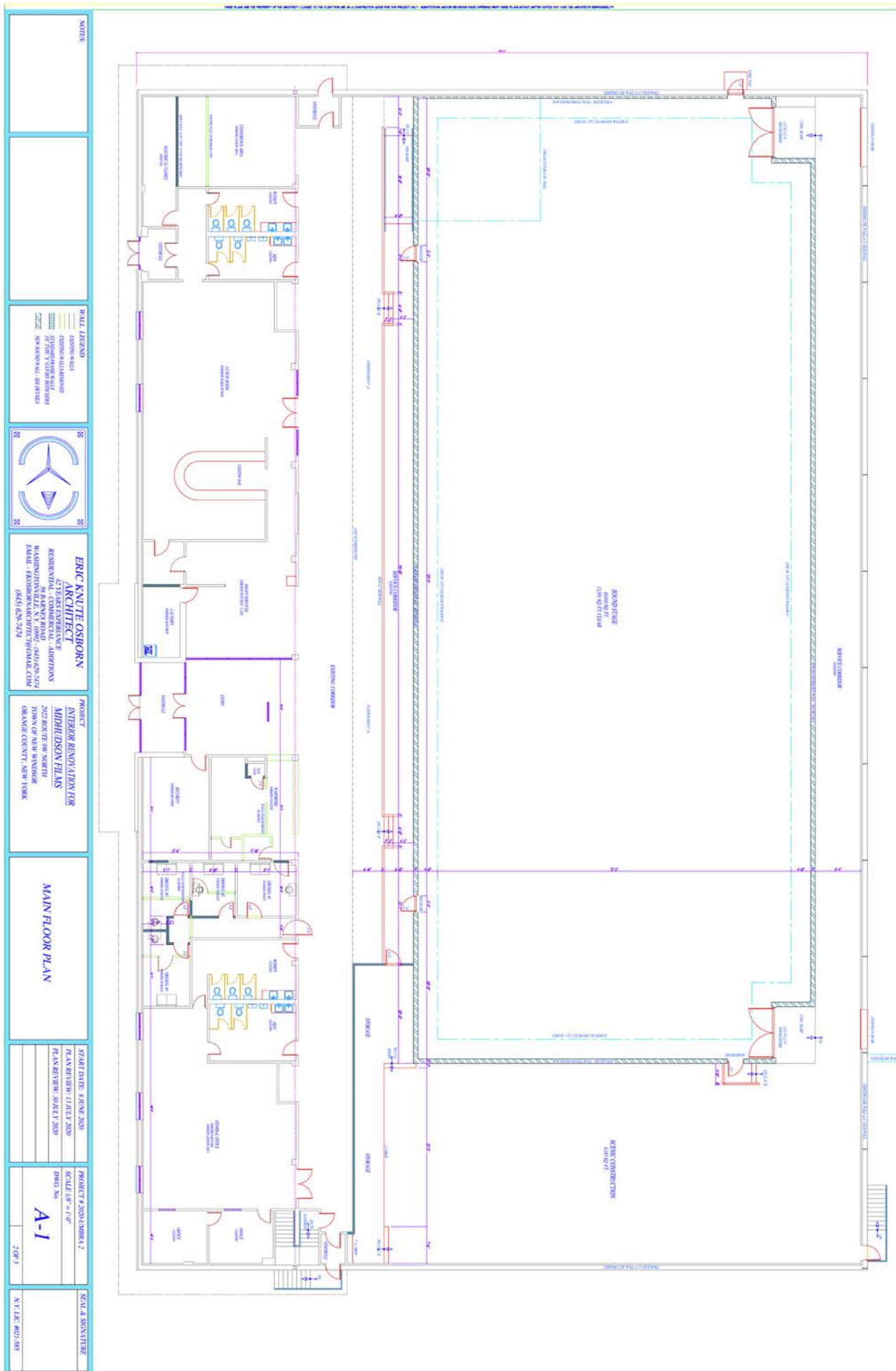
SCALE 1/10
PAGE No
A

MEZZANINE PLAN

[illegible]

STAGE 2 WITH SUPPORT AREA





STAGE 4



STAGE PLAN	12/29/20	SP
SHOOTING PLAN	$\frac{1}{2} \times 1 \frac{1}{2}$	
STAGE & MOTION/CELEBRATION MATERIAL COVER LEVEL	1A	
201 LAKE STREET, WESTPORT, NY 10590		
DATE: 12/29/20	DATE: 12/29/20	01
NAME: ANDREW P. LAM	NAME: ANDREW P. LAM	
PHONE: 914.361.1000	PHONE: 914.361.1000	

GRIP & ELECTRIC INVENTORY ONLY

LIGHTING PACKAGES AVAILABLE AND QUOTED PER REQUEST OF CLIENT'S SPECS.

UMBRA BASIC STUDIO GRIP EQUIPMENT

GRIP

30-25LBS. SANDBAGS	8-2K STIRUPS
1-EXTENSION LADDER-28'	8-750 STIRUP
1-STEP LADDER-12'	4-2K/750 ADAPTER
1-STEP LADDER-10'	6-GOBO HEAD/SHORT ARM
1-STEP LADDER-8'	2-4" C-CLAMP
1-STEP LADDER-6'	2-4" STUDDERED C-CLAMP
1-STEP LADDER-4'	2-6" C-CLAMP
6-SOUND BLANKETS	2-6" STUDDERED C-CLAMP
1-BOX WEDGES	2-8" C-CLAMP
10-FULL APPLE BOXES	2-8" STUDDERED C-CLAMP
10-HALF APPLE BOXES	2-2K BIG BEN CLAMPS
10-QUARTER APPLE BOXES	2-750 BIG BEN CLAMPS
10-PANCAKES	2-C-BOOM CLAMPS
2-SM. FURNITURE CLAMPS W/750 STUD	2-MED. FURNITURE CLAMPS W/750 STUD
2-LG. FURNITURE CLAMPS W/750 STUD	4-BEADBOARD HOLDERS (duck bills)
40-SAFETY CHAIN	25-LG. SPRING CLAMP
25-MED. SPRING CLAMP	25-SM. SPRING CLAMP
6-750 SCISSOR CLIPS	6-750 PIGEONS
6-2K PIGEONS	20-2K PIPE HANGERS
20-750 PIPE HANGERS	2-2K OFFSET ARMS
2-750 OFFSET ARMS	12-FIXED CHEESEBORO
12-SWIVEL CHEESEBORO	4-10' RUBBER MATT

4-18"X24" SOLID

4-18"X24" DOUBLE NET

4-18"X24" OPEN FRAME

4-2'X3' SOLID

4-2'X3' DOUBLE NET

4-2'X3' OPEN FRAME

6-4'X4' FLOPPY SOLID

6-4'X4' OPEN FRAME

4-4'X4' SINGLE NET

1-12'X12 BUTTERFLY

4-18"X24" SILK

4-18"X24" SINGLE NET

4-2'X3' SILK

4-2'X3' SINGLE NET

2-24"X72" MEAT AXE

4-4'X4' DOUBLE NET

4-4'X4' SILK

1-8'X8' BUTTERFLY

UMBRA BASIC STUDIO ELECTRIC EQUIPMENT

ELECTRIC

1-GENIE 25' SCISSOR LIFT	6-50' 100 AMP WHIP
6-50' 5 WIRE BANDED	6-25' 100 AMP WHIP
2-600 AMP PASS THRU BOX	6-50' 60 AMP WHIP
4-100 AMP LUNCHBOX	6-25' 60 AMP WHIP
4-100 AMP TO 60 AMP SPLITTER	4-100 AMP TO 100 AMP SPLITTER
4- 60 AMP WOODHEAD	10-CUBE TAP
25-25' 12/3 STINGER	25-50' 12/3 STINGER
2 SETS CAMLOK T'S	4-25' QUAD STINGER
2-SUICIDE T'S	6-YELLOW JACKET
1-HONDA 7000 GENERATOR W/60 AMP WHIP AND WOODHEAD	

UMBRA LIGHTS-TUNGSTEN

1-STUDIO MR 10K FRESNEL

2-ARRI 2K SOFT LIGHT

1-STUDIO MR STUDIO FRESNEL

3-MR 2K SOFT LIGHT

1-ARRI T5 FRESNEL

2-ARRI 1K SOFT LIGHT

4-MR STUDIO 2K FRESNEL

3-MR 1K SOFT LIGHT

9-MR 2K BABY JUNIOR

4-MR 2K MIGHTY

2-ARRI T2 FRESNEL

4-MR 1K MICKEY

6-MR 1K FRESNEL

4-MR 1K MOLE PAR (VARIOUS BULBS)

6-ARRI T1 FRESNEL

2-MR 1K CYC LIGHT

4-MR 1K BABY BABY

6-MR 650 TWEENIE

4-MR 200 INKY

UMBRA LIGHTS-LED, KINO FLO, OTHER

1-WALL-O-LITE	10-LED CHROMA BI-COLOR Q SPACE LIGHT
2-IMAGE 80	2-LED MR BI-COLOR SPACE LIGHT
4-400 PARABEAM	12-LED PHILLIPS 1'X1' BI-COLOR PANELS
4-210 PARABEAM	10-LED AADYNTECH BI-COLOR PUNCH
2-VISTA BEAM	6-LED ASTRA 1'X1' BI-COLOR PANELS
4-4'X4' BANK	8-BEAM 230 MOVING LIGHTS
2-DIVA	6-LED CHROMA Q COLORFORCE II
2-TEGRA	6-LED PHILLIPS COLORBLAST

UMBRA BASIC STUDIO EQUIPMENT STANDS

STANDS

16-AVenger BLACK C-STANDS

2-AVenger MINI BLACK C-STANDS (standard base)

2-AVenger MINI BLACK C-STANDS (mini base)

4-MATTHEWS HI-BOY STANDS

4-MATTHEWS MEDIUM BOY STANDS

2-AVenger ROLLING STUDIO CRANK STANDS

8-AVenger 2K ROLLING STANDS

2-MATTHEWS 3 RISE 750 ROLLING STANDS

10-MOLE RICHARDSON 2 RISE 750 ROLLING STANDS

UMBRA BASIC STUDIO EQUIPMENT CARTS

CARTS: ALL CARTS ARE BACKSTAGE AND ROLLING

1-GRIP HARDWARE CART

1-C-STAND CART

1-HEAD CART FOR LIGHTS

1-APPLE BOX CART

2-MUSCLE CARTS

2-STINGER CARTS

1-ELECTRICAL DISTRO CART

1-STAND CART

1-4'X4' CART

1-YELLOW JACKET CART

6-HAMPERS

10-MILK CRATES

UMBRA GREEN SCREEN STUDIO

10-2K MR SKYPAN W/SKIRTS

3-6K MR LED SPACE LIGHT

1-ETC 24 CHANNEL DIMMER BOARD

1-MONITOR

10-HANDSHAKE 60AMP/EDISON

10-2K PIPE HANGER

14-SAFETY CHAIN

1-MULTI PORT OPTI SPLITTER

4-SACOPEX EXTENSION

12-25'STINGERS

SACOPEX BREAKOUTS/FEMALE EDISON

5 PIN DMX CABLES/ASSORTMENT OF SIZES

1-600AMP PASS THRU BOX (STUDIO FLOOR)

2-50' 100AMP WHIP

1-100AMP LUNCHBOX

2-50' 5- WIRE BANDED

2-SUICIDE T'S

GREEN APPLE BOXES

4-FULL

4-HALF

4-QUARTER

4-PANCAKES

LOCALLY SOURCED

RESTAURANTS

Hudson Taco
27 Water St
Newburgh, NY 12550
(845) 565-8226

Notos Deli
165 S Plank Rd.
Newburgh, NY 12550
(845) 565-3836

The Wherehouse
119 Liberty St.
Newburgh, NY 12550
(845) 561-7240

Libert Street Bistro
97 Liberty St.
Newburgh, NY 12550
(845) 562-3900

Vesuvios
300 Dupont Ave.
Newburgh, NY 12550
(845) 565-3199

Stephanos
32 Market St.
Wappingers Falls, NY 12590
(845) 297-9300

Cinema Pizza
215 Quassack Ave
New Windsor, NY
(845) 563-0280

T&M II Go
167 East Main Street
Washingtonville, NY 10922
(845) 497-8393

FILM CATERING

Pamela's Traveling Feast
info@pamelastravelingfeast.
com
845-926-6186 (mobile)
845-562-4505 (main)

GROCERY STORE/DELI

Gracias Market
123 North St.
Middletown, NY 10940
(845) 341-0121

Market 32
115 Temple Hill Rd.
New Windsor, NY 12553
(845) 565-8637

Walmart Super Center
1201 NY-300
Newburgh, NY 12550
(845) 567-6007

Sam's Club
56 W Merritt Blvd.
Fishkill, NY 12524
(845) 896-4980

Antony's Deli
287 New Windsor Hwy
New Windsor, NY 12553

POST OFFICE

Newburgh Post Office
467 Broadway
Newburgh, NY 12550
(800) 275-8777

OFFICE SUPPLIES

Office Depot
401 NY-300 #1135
Newburgh, NY 12550
(845) 566-4909

Staples
2522 South Rd.
Poughkeepsie, NY 12601
(845) 483-0765

ART SUPPLIES

Prop & Paint
www.propandpaint.com
2 Washington St,
Newburgh, NY 12550
(845) 764-0445

Scenic Arts Studios
www.scenicartstudios.com
302 Dr. Martin Luther King Blvd
Newburgh, NY 12550
(845) 245-4648

CAR RENTALS

Enterprise
63 NY-17K
Newburgh, NY 12550
(845) 562-3311

Avis
1130 1st St
New Windsor, NY 12553
(845) 564-4402

Budget
1130 1st St
New Windsor, NY 12553
(845) 567-3029

BANKS

Wells Fargo
43 N Plank Rd
Newburgh, NY 12550
(845) 565-2403

Key Bank
1228 NY-300
Newburgh, NY 12550
(845) 564-0990

Chase
5020 US-9W
Newburgh, NY 12550
(845) 562-5873

LOCALLY SOURCED

BANKS (CON'T)

TD Bank
800 Broadway
Newburgh, NY 12550
(845) 565-4001

HARDWARE STORES

Hale's
189 Broadway
Newburgh, NY 12550
(845) 561-6540

Home Depot
1220 NY-300
Newburgh, NY 12550
(845) 561-6540

Lowe's
1239 Route 300
Newburgh, NY 12550

CAR SERVICE/ TAXI SERVICE

Patty & Company (Patty)
194 Washington St
Newburgh, NY 12550
(845) 565-1311

GARAGE FOR CAR REPAIRS

Patty & Company (Gary)
194 Washington St
Newburgh, NY 12550
(845) 565-1311

LOCAL FILM OFFICES

Newburgh Film Office
83 Broadway
Newburgh, NY 12550
(845) 569-9400
Contact: Ellen Fillo
EFillo@cityofnewburgh-ny.gov

Orange County Film Office
(845) 469-9120
Contacts: Nora Martinez
nmartinez@orangecountygov.org

NEW YORK STATE FILM TAX CREDIT

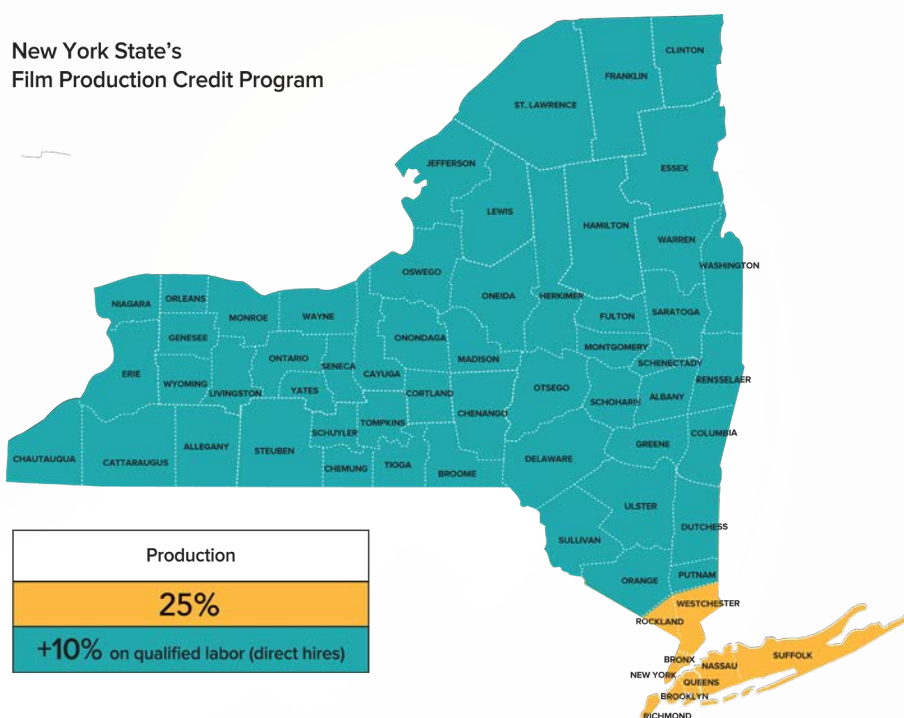


PROGRAM HIGHLIGHTS

Program credits of \$420 million per year can be allocated and used to encourage companies to produce film projects in New York and help create and maintain film industry jobs.

Production companies may be eligible to receive a fully refundable credit of 25 percent of qualified production costs and post-production costs incurred in New York State (NYS).

For the period 2015-2025, productions with budgets over \$500,000 can receive an additional 10 percent credit on qualified labor expenses incurred in the following counties:



ELIGIBILITY

- The Program is limited to feature films, television series, relocated television series, television pilots, and films for television.
- "Qualified film" shall not include (i) a documentary film, news or current affairs program, interview or talk program, "how-to" (i.e., instructional) film or program, film or program consisting primarily of stock footage, sporting event or sporting program, game show, award ceremony, film or program intended primarily for industrial, corporate or institutional end-users, fundraising film or program, daytime drama (i.e., daytime "soap opera"), commercials, music videos or "reality" program, or (ii) a production for which records are required under section 2257 of title 18, United States code, to be maintained with respect to any performer in such production (reporting of books, films, etc. with respect to sexually explicit conduct).
- The production credit is available for companies that film a substantial portion of their project in NYS.

FOR MORE INFORMATION AND TO APPLY PLEASE VISIT
THE EMPIRE STATE DEVELOPMENT WEBSITE AT [HTTPS://ESD.NY.GOV](https://ESD.NY.GOV)